

FOR SALE

CAROLINA
COMMERCIAL, LLC
REAL ESTATE SOLUTIONS

2.35 Acres General Commercial Land

0 Clements Ferry Road, Charleston, SC 29492



SITE SIZE:	2.35 TOTAL ACRES
TMS #:	271-00-02-066 (1.76 ACRES) 271-00-02-065 (0.59 ACRES)
ZONING:	GENERAL COMMERCIAL
MUNICIPALITY:	CITY OF CHARLESTON
COUNTY:	BERKELEY
SALES PRICE:	\$515,000

SUMMARY

Two commercial lots just off of Clements Ferry Road beside the Sportsman Island Complex. The site provides quick and easy access to I-526 and just minutes from Daniel Island, Mount Pleasant and North Charleston.

Water and sewer is available and provided by the City of Charleston.

FOR MORE INFORMATION CONTACT:

CHARLIE MOORE, CCIM SIOR

charlie@carolinacre.com

843.224.1844

WILL MOORE

will@carolinacre.com

843.478.4800

751 Johnnie Dodds Blvd. #200

Mt. Pleasant, SC 29464

843.805.6060 et. 18

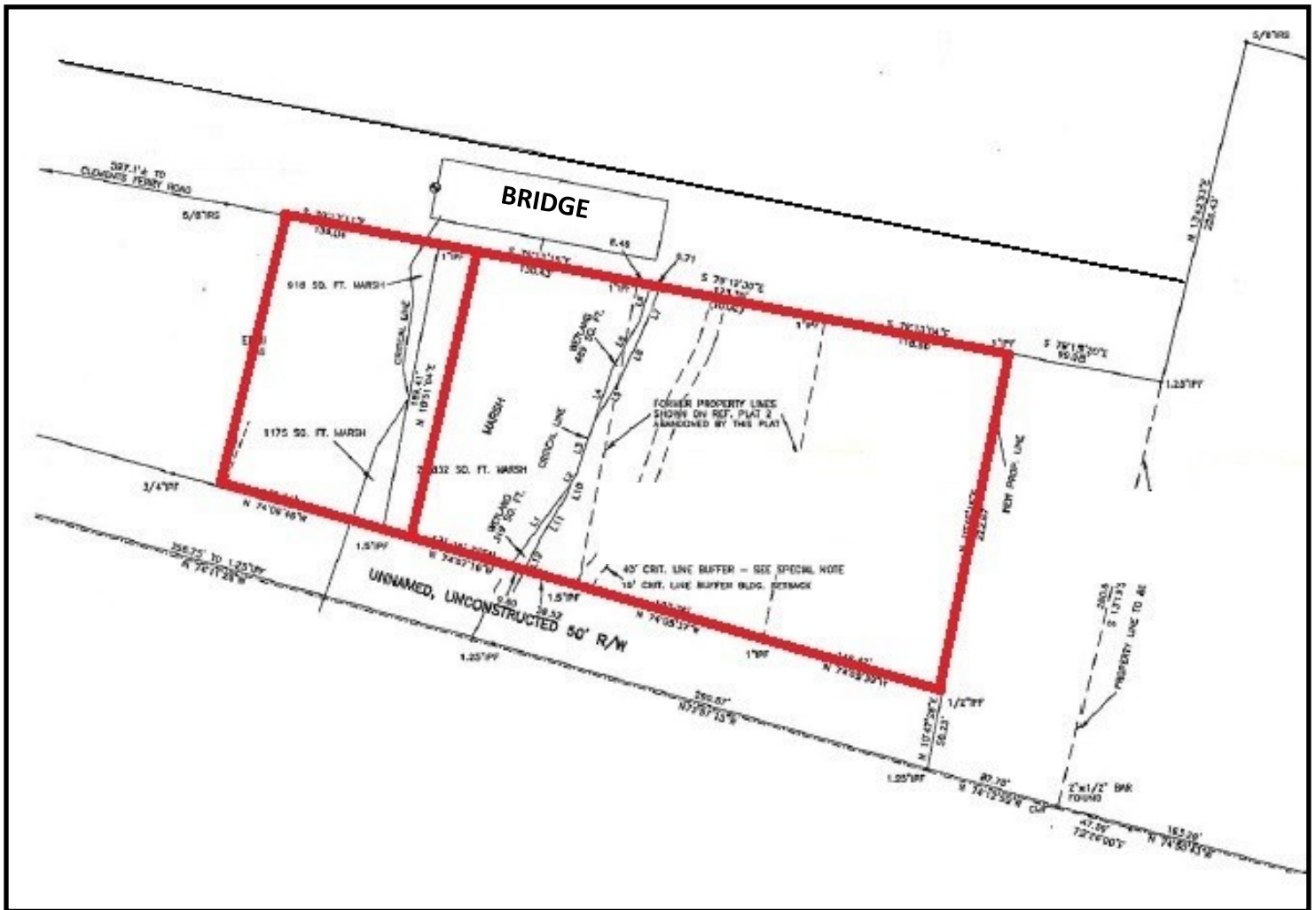
www.carolinacre.com

FOR SALE

CAROLINA
COMMERCIAL, LLC
REAL ESTATE SOLUTIONS

2.35 Acres General Commercial Land
0 Clements Ferry Road, Charleston, SC 29492

PROPERTY PLAT



The information contained herein has been obtained from sources deemed reliable but not warranted, guaranteed or represented as to the completeness for accuracy by Carolina Commercial, LLC.

FOR MORE INFORMATION CONTACT:

CHARLIE MOORE, CCIM SIOR

charlie@carolinacre.com

843.224.1844

WILL MOORE

will@carolinacre.com

843.478.4800

751 Johnnie Dodds Blvd. #200

Mt. Pleasant, SC 29464

843.805.6060 ext. 18

www.carolinacre.com

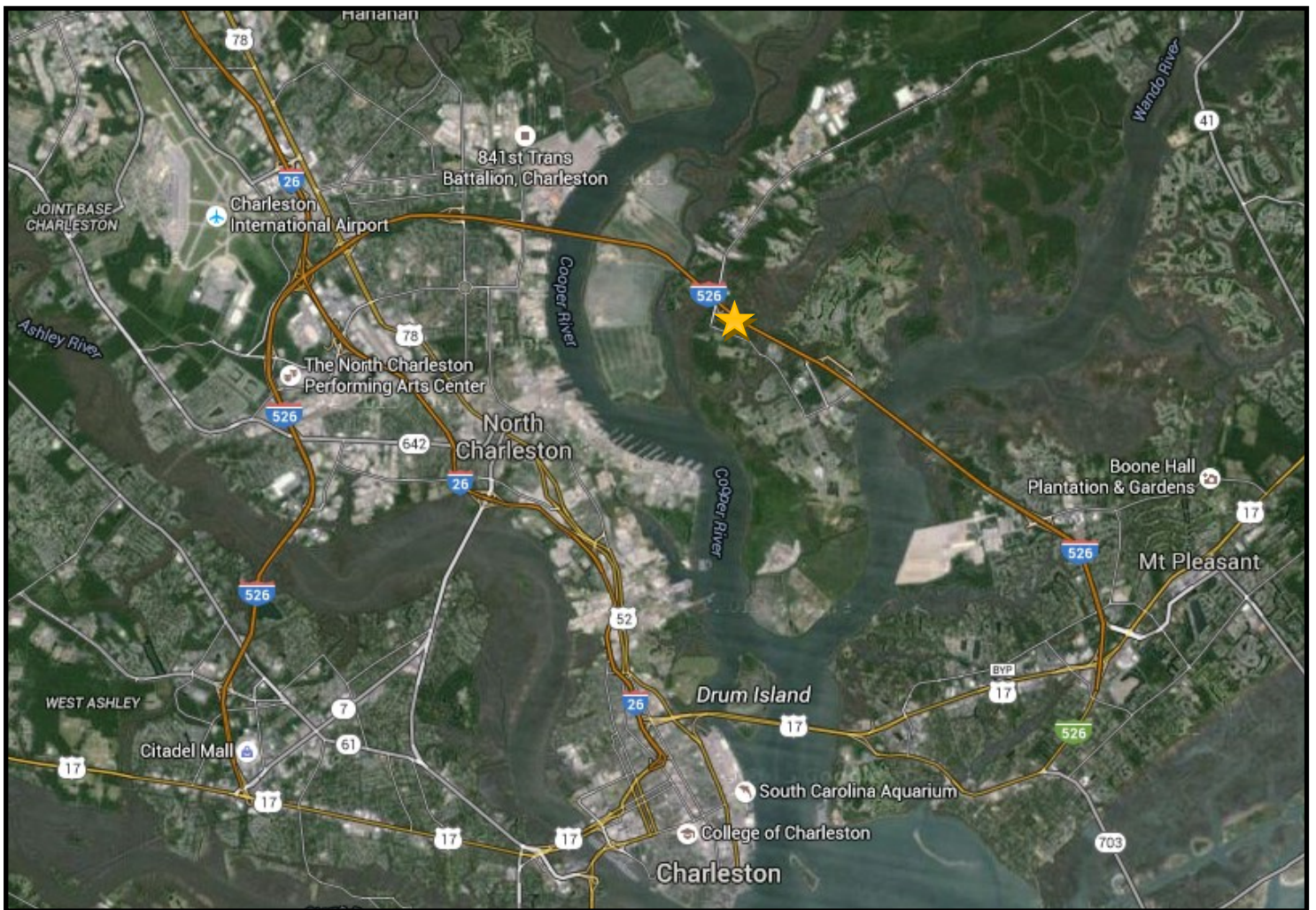
FOR SALE

CAROLINA
COMMERCIAL, LLC
REAL ESTATE SOLUTIONS

2.35 Acres General Commercial Land

0 Clements Ferry Road, Charleston, SC 29492

AERIAL MAP



FOR MORE INFORMATION CONTACT:

CHARLIE MOORE, CCIM SIOR

charlie@carolinacre.com

843.224.1844

WILL MOORE

will@carolinacre.com

843.478.4800

751 Johnnie Dodds Blvd. #200

Mt. Pleasant, SC 29464

843.805.6060 ext. 18

www.carolinacre.com